

Air conditioner

Installation manual

PC6EUX*AN

- Thank you for purchasing this Samsung air conditioner.
- Before operating this unit, please read this manual carefully and retain it for future reference.

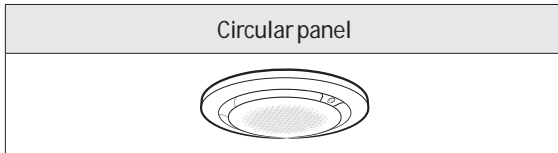


SAMSUNG

360 Cassette Panel (Auto-Lift Grille)




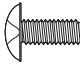
After installing the product, show the user how to use the product.

Types of 360 cassette panels



Accessories

Before installation, check the following components:

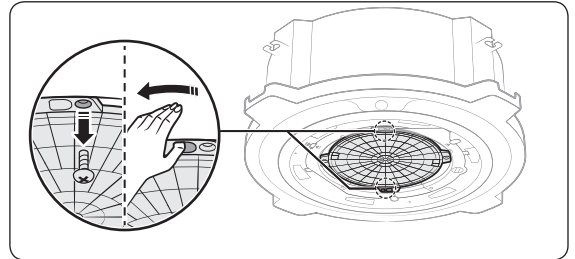
Item name	Appearance
Installation manual (1)	
User manual (1)	
Remote control (1)	
M4 screw (4)	

CAUTION

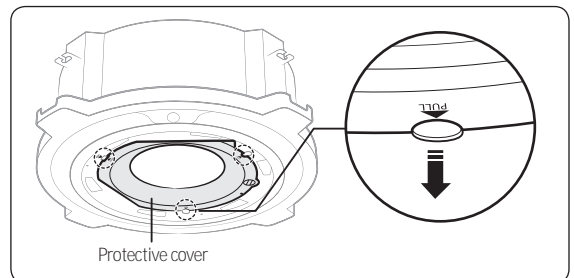
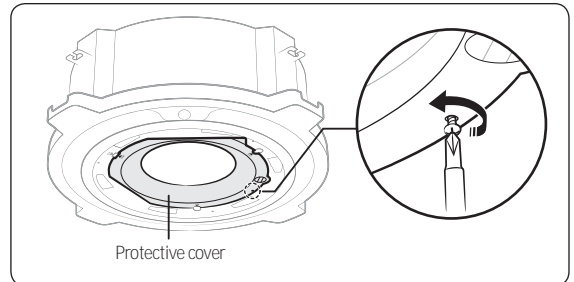
- Care must be paid while handling the panel.
- Never lean the panel against a wall or place it on a protruding object. It may cause damage to the panel's surface.
- Be careful when holding the air intake panel with your hand during installation. It may cause injury.

Installing the auto-lift grille

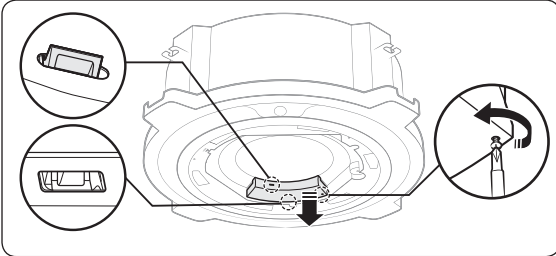
- 1 Remove two screws and then turn the guard fan for removal.



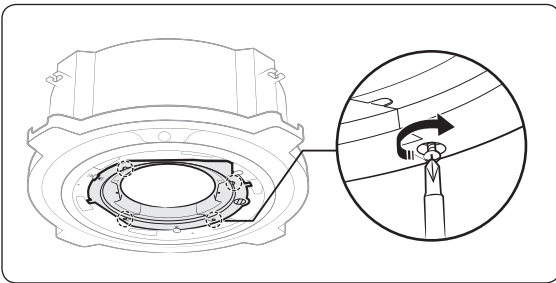
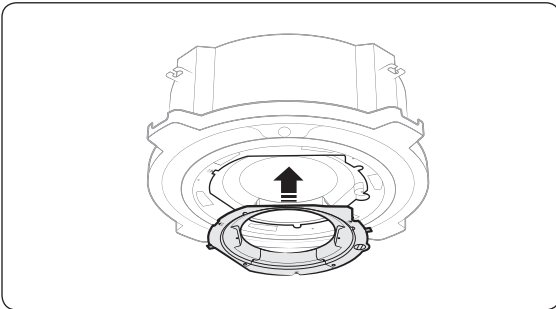
- 2 Remove the protective cover.



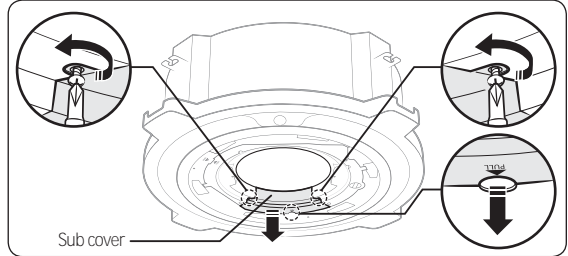
3 Remove the electrical system unit cover.



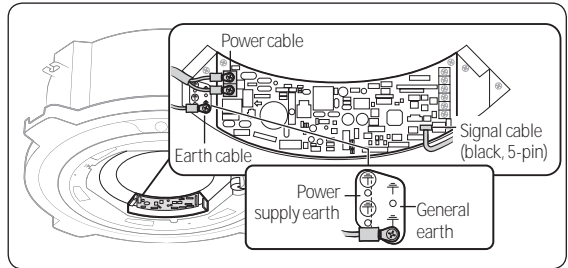
4 Fix the lift kit to the indoor unit by pressing the hook, and then tighten the screws.



5 Remove the sub cover.



6 Connect the earth, power and signal cables, and then fix the wiring as shown in the figure. Next, attach the electrical system unit cover and then the sub cover.

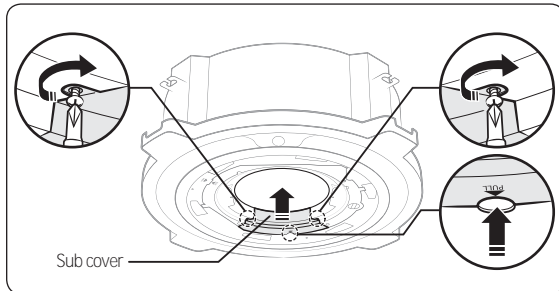


⚠ CAUTION

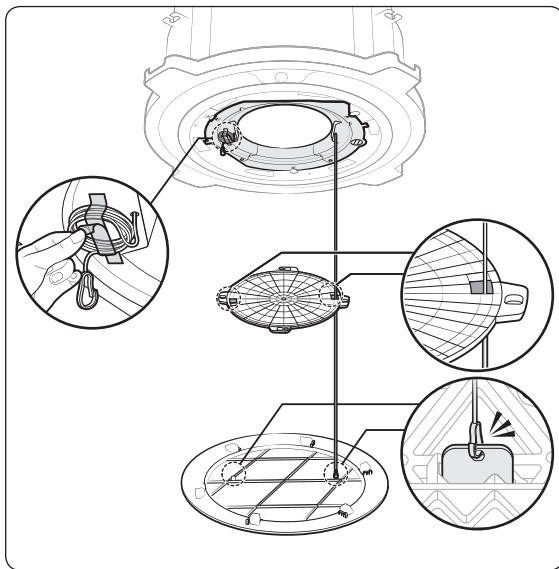
- If installing the AM***** model, make sure the two power lines, going into the indoor unit, are fastened using a single compressed ring terminal.

360 Cassette Panel (Auto-Lift Grille)

7 Close the sub cover.

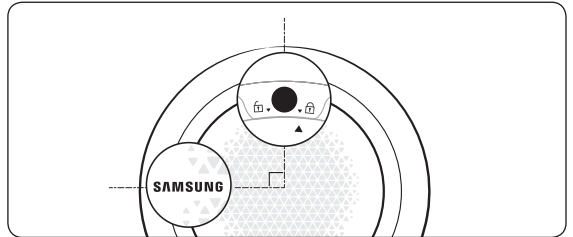


8 Install the guard fan after removing the wire tape. Pull the wire through the guard fan. Connect the wire to the grille.



NOTE

- If the grille is installed correctly, the indicator on the indoor unit is at a 90 degree angle with the Samsung logo on the grille.



Test operation and inspection

- 1 Turn on the product.
 - The grille automatically moves up.
- 2 Use the remote control to confirm that the grille moves up and down properly.
- 3 Also confirm that the lifted grille has been fastened tightly into place and is completely closed.

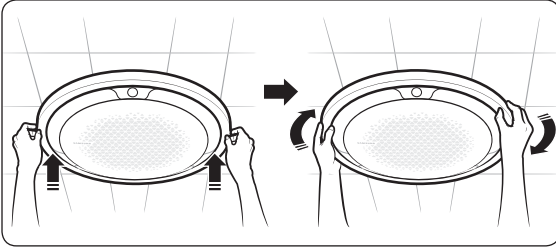
NOTE

- If you lower the grille, it only moves down the specified distance and automatically stops moving. The default height setting is 2 m.
- You can change the height setting by pressing the [Stop] button three times within 3 seconds at the height you want.
- If you specify a height setting again from a different height, the height setting will be changed.
- To reset the height setting to the default value, press and hold the [Stop] button for 5 seconds.

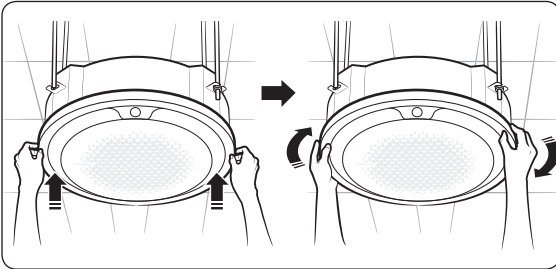
Installing the circular panel on the indoor unit

1 Insert the decoration panel the indoor unit body. Then rotate the decoration panel clockwise until it is assembled firmly.

- Ceiling type



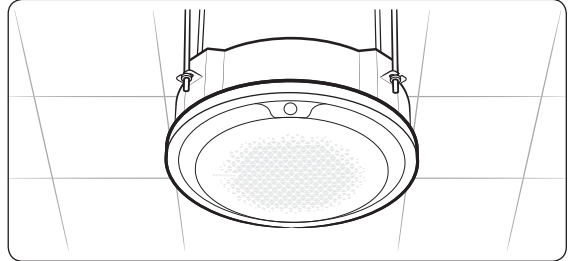
- Open type



NOTE

- Make sure you turn the panel all the way until the panel feels like it is hooked onto the internal structure.

2 Confirm that the panel has been fastened tightly to the indoor unit.



NOTE

- If the panel is installed incorrectly, air may leak out.

CAUTION

- Make sure to only apply paints and varnishes for resins (ABS, HIPS) or paint thinners. If you apply lacquers for general use on the panel, it may lead to discoloration or erosion on the surface of the panel.

