

# Air conditioner

---

## User manual

PC6EUX\*AN

---

- Thank you for purchasing this Samsung air conditioner.
- Before operating this unit, please read this manual carefully and retain it for future reference.



**SAMSUNG**

# Contents

---

<b>Safety Information</b>	<b>3</b>
Safety Information	3
<b>At a Glance</b>	<b>10</b>
Indoor Unit Overview	10
Remote Control Overview	11
How to insert a remote control battery	11
<b>Cleaning and Maintenance</b>	<b>12</b>
Cleaning and Maintaining	12
Cleaning the indoor unit exterior	12
Removing the air filter	13
Cleaning the air filter	14
Re-attaching the air filter • Technical specifications	15



*Correct Disposal of This Product  
(Waste Electrical & Electronic Equipment)*

*(Applicable in countries with separate collection systems)*

This marking on the product, accessories or literature indicates that the product and its electronic accessories (e.g. charger, headset, USB cable) should not be disposed of with other household waste at the end of their working life. To prevent possible harm to the environment or human health from uncontrolled waste disposal, please separate these items from other types of waste and recycle them responsibly to promote the sustainable reuse of material resources.

Household users should contact either the retailer where they purchased this product, or their local government office, for details of where and how they can take these items for environmentally safe recycling.

Business users should contact their supplier and check the terms and conditions of the purchase contract. This product and its electronic accessories should not be mixed with other commercial wastes for disposal.

For information on Samsung's environmental commitments and product-specific regulatory obligations, e.g. REACH, WEEE, Batteries, visit: [www.samsung.com/uk/aboutsamsung/sustainability/environment/our-commitment/data/](http://www.samsung.com/uk/aboutsamsung/sustainability/environment/our-commitment/data/)

# Safety Information

---

Before using your new air conditioner, please read this manual thoroughly to ensure that you know how to safely and efficiently operate the extensive features and functions of your new appliance.






Because the following operating instructions cover various models, the characteristics of your air conditioner may differ slightly from those described in this manual. If you have any questions, call your nearest contact centre or find help and information online at [www.samsung.com](http://www.samsung.com).

## **WARNING**

Hazards or unsafe practices that may result in severe personal injury or death.

## **CAUTION**

Hazards or unsafe practices that may result in minor personal injury or property damage.

-  Follow directions.
-  Do NOT attempt.
-  Make sure the machine is grounded to prevent electric shock.
-  Cut-off the power supply.
-  Do NOT disassemble.


# Safety Information

---

## FOR INSTALLATION

---

### WARNING


-  Use the power line with the power specifications of the product or higher and use the power line for this appliance only. In addition, do not use an extension line.
  - Extending the power line may result in electric shock or fire.
  - Do not use an electric transformer. It may result in electric shock or fire.
  - If the voltage/frequency/rated current condition is different, it may cause fire.

**The installation of this appliance must be performed by a qualified technician or service company.**

- Failing to do so may result in electric shock, fire, explosion, problems with the product, or injury.

**Install a switch and circuit breaker dedicated to the air conditioner.**

- Failing to do so may result in electric shock or fire.


-  Do not install this appliance near a heater, inflammable material. Do not install this appliance in a humid, oily or dusty location, in a location exposed to direct sunlight and water (rain drops). Do not install this appliance in a location where gas may leak.

- This may result in electric shock or fire.

-  This appliance must be properly grounded. Do not ground the appliance to a gas pipe, plastic water pipe, or telephone line.

- Failure to do so may result in electric shock, fire, an explosion, or other problems with the product.

### CAUTION

-  Install the draining hose properly so that water is drained correctly.
  - Failing to do so may result in water overflowing and property damage. Avoid adding drain to waste pipes as odours may arise in the future.

---

## FOR POWER SUPPLY

---

### WARNING

- ❗ When the circuit breaker is damaged, contact your nearest service centre.
- ⊘ Do not pull or excessively bend the power line. Do not twist or tie the power line. Do not hook the power line over a metal object, place a heavy object on the power line, insert the power line between objects, or push the power line into the space behind the appliance.
  - This may result in electric shock or fire.

### CAUTION

- ⚡ When not using the air conditioner for a long period of time or during a thunder/lightning storm, cut the power at the circuit breaker.
  - Failing to do so may result in electric shock or fire.

---

## FOR USING

---

### WARNING

- ❗ If the appliance is flooded, please contact your nearest service centre.
  - Failing to do so may result in electric shock or fire.

If the appliance generates a strange noise, a burning smell or smoke, cut-off the power supply immediately and contact the nearest service center.

- Failing to do so may result in electric shock or fire.

In the event of a gas leak (such as propane gas, LP gas, etc.), ventilate immediately without touching the power line. Do not touch the appliance or power line.

- Do not use a ventilating fan.
- A spark may result in an explosion or fire.

# Safety Information

---

- ❗ **To reinstall the air conditioner, please contact your nearest service centre.**
  - Failing to do so may result in problems with the product, water leakage, electric shock, or fire.
  - A delivery service for the product is not provided. If you reinstall the product in another location, additional construction expenses and an installation fee will be charged.
  - Especially, when you wish to install the product in an unusual location such as in an industrial area or near the seaside where it is exposed to the salt in the air, please contact your nearest service centre.

- ⊘ **Do not touch the circuit breaker with wet hands.**

- This may result in electric shock.

**Do not turn the air conditioner off with the circuit breaker while it is operating.**

- Turning the air conditioner off and then on again with the circuit breaker may cause a spark and result in electric shock or fire.

**After unpacking the air conditioner, keep all packaging materials well out of the reach of children, as packaging materials can be dangerous to children.**

- If a child places a bag over its head, it may result in suffocation.

**Do not touch the front panel with your hands or fingers during the heating operation.**

- This may result in electric shock or burns.

**Do not insert your fingers or foreign substances into the outlet when the air conditioner is operating or the front panel is closing.**

- Take special care that children do not injure themselves by inserting their fingers into the product.

**Do not insert your fingers or foreign substances into the air inlet/outlet of the air conditioner.**


- Take special care that children do not injure themselves by inserting their fingers into the product.

 Do not strike or pull the air conditioner with excessive force.

- This may result in fire, injury, or problems with the product.

**Do not use this air conditioner for long periods of time in badly ventilated locations or near infirm people.**

- Since this may be dangerous due to a lack of oxygen, open a window at least once an hour.

 If any foreign substance such as water has entered the appliance, cut-off the power supply and contact the nearest service center.

- Failing to do so may result in electric shock or fire.

 Do not attempt to repair, disassemble, or modify the appliance yourself.

- Do not use any fuse (such as copper, steel wire, etc.) other than the standard fuse.
- Failing to do so may result in electric shock, fire, problems with the product, or injury.

 **CAUTION**

 Do not place objects or devices under the indoor unit.

- Water dripping from the indoor unit may result in fire or property damage.

**Max current is measured according to IEC standard for safety and current is measured according to ISO standard for energy efficiency.**

 Do not operate the appliance with wet hands.

- This may result in electric shock.

**Do not spray volatile material such as insecticide onto the surface of the appliance.**

- As well as being harmful to humans, it may also result in electric shock, fire or problems with the product.

**Do not drink the water from the air conditioner.**

- The water may be harmful to humans.

# Safety Information

---

- ⊘ Do not apply a strong impact to the remote controller and do not disassemble the remote controller.

Do not touch the pipes connected with the product.

- This may result in burns or injury.

Do not use this air conditioner to preserve precision equipment, food, animals, plants or cosmetics, or for any other unusual purposes.

- This may result in property damage.

**Avoid directly exposing humans, animals or plants from the air flow from the air conditioner for long periods of time.**

- This may result in harm to humans, animals or plants.

This appliance is not intended for use by persons (including children) with reduced physical, sensory or mental capabilities, or lack of experience and knowledge, unless they have been given supervision or instruction concerning use of the appliance by a person responsible for their safety. Children should be supervised to ensure that they do not play with the appliance.

For use in Europe: This appliance can be used by children aged from 8 years and above and persons with reduced physical, sensory or mental capabilities or lack of experience and knowledge if they have been given supervision or instruction concerning use of the appliance in a safe way and understand the hazards involved. Children shall not play with the appliance. Cleaning and user maintenance shall not be made by children without supervision.



---

## FOR CLEANING

---

### **WARNING**

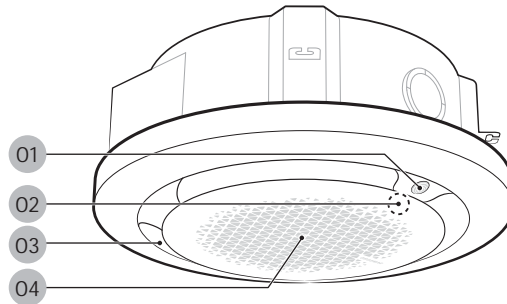
- ⊘ Do not clean the appliance by spraying water directly onto it. Do not use benzene, thinner, alcohol or acetone to clean the appliance.
    - This may result in discoloration, deformation, damage, electric shock or fire.
- Before cleaning or performing maintenance, cut-off the power supply and wait until the fan stops.
- Failing to do so may result in electric shock or fire.

### **CAUTION**

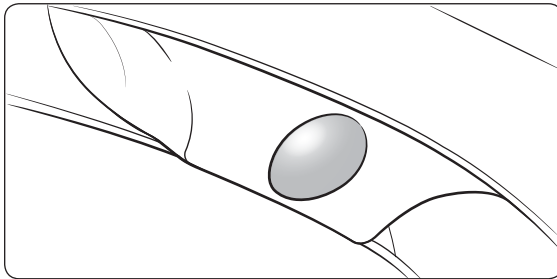
- ⊘ Do not clean the inside of the air conditioner by yourself.
  - For cleaning inside the appliance, contact your nearest service centre.
  - When cleaning the internal filter, refer to the descriptions in the 'Cleaning and Maintaining' section.
  - Failure to do may result in damage, electric shock or fire.

# Indoor Unit Overview

The product appearance and labels may differ from the illustrations, depending on the model and panel type.



## 01 Display



Operation status	Indication on the display
Power on	Ice blue (blinking)
In operation	Ice blue
Stopped	Off
Timed on/off function	Blue
Requires filter cleaning	Yellow green
Defrost function	Ice blue (blinking once every 10 seconds)
Wide	
Mid	
Spot	
Swing	

## NOTE

- For the AR-KHO\*\* wireless remote control, the air flow direction indications appear on its display, too.
- By using the AR-KHO\*\* wireless remote control, you can turn on or turn off the air flow direction indications that appear on the indoor unit display.
- For the AR-EHO\*\*, AR-ECO\*\* wireless remote control, which is designed generally for any indoor units, the air flow direction is not shown on the remote control display. Control the air flow direction with checking it on the indoor unit display.

**02** Remote control sensor (behind the front grille)

**03** Air outlet

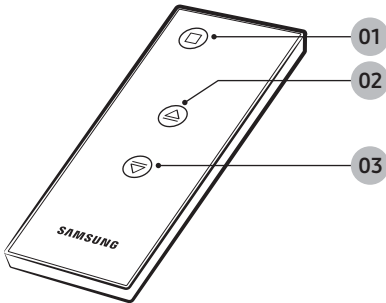
**04** Front grille / Air filter (behind the front grille)

## NOTE

- For information on how to operate the product, see the user manual for the remote control.
- The actual appearances of the indoor units and their displays may differ slightly from the images depicted above.
- By using the AR-KHO\*\* wireless remote control, which is designed specifically for the 360 cassette indoor units, you can operate them more conveniently. In addition, because you can check the operation status of each indoor unit on the remote control, you can use the indoor units more effectively.

# Remote Control Overview

During installation or filter cleaning, you can use the dedicated remote control to raise or lower the grille of the lift grille-type indoor unit.

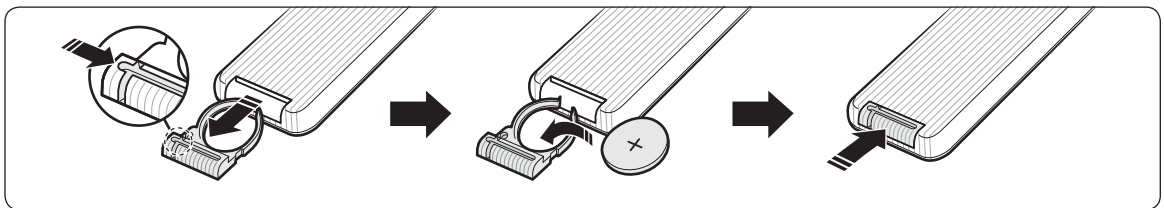


- 01 Stop button
- 02 Grille Up button
- 03 Grille Down button

## NOTE

- Exercise caution to ensure that the remote control does not contact liquid.
- If you install the product with the grille lowered and then connect the power, the grille automatically moves up.
- If you press the [Grille Down] button, the grille moves down the specified height and automatically stops moving. The default height setting is 2 m. To stop the grille from moving, press the [Stop] button.
- You can change the height setting by pressing the [Stop] button three times within 3 seconds at the height you want.
- If you specify a height setting again from a different height, the height setting will be changed.
- To reset the height setting to the default value, press and hold the [Stop] button for 5 seconds.

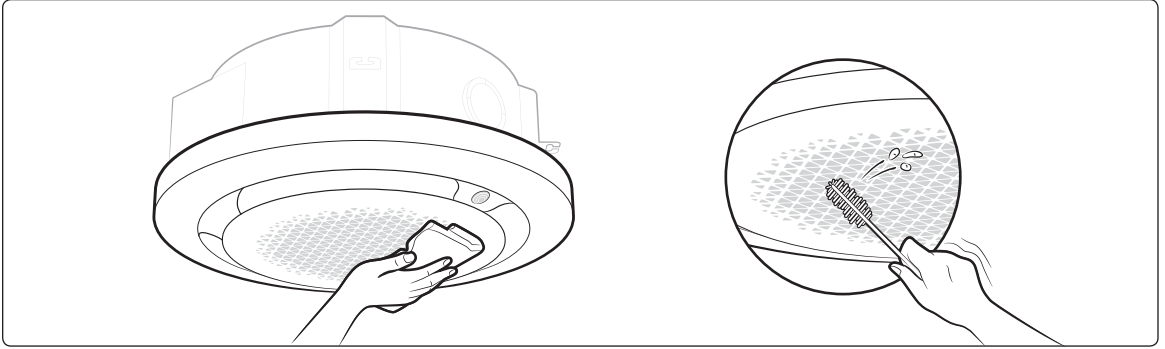
## How to insert a remote control battery



# Cleaning and Maintaining

**⚠ CAUTION** For cleaning and maintenance, be sure to turn off the circuit breaker.

## Cleaning the indoor unit exterior



Wipe the surface of the unit with a slightly wet or dry cloth when needed. Wipe off dirt from odd-shaped areas by using a soft brush.

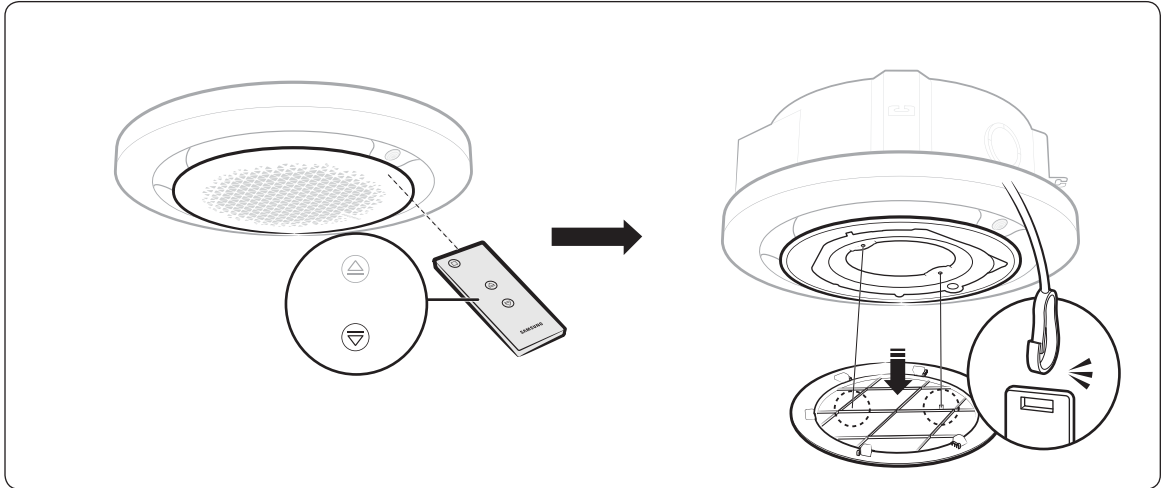
**⚠ CAUTION**

- Do not use alkaline detergent, sulphuric acid, hydrochloric acid, or organic solvents (such as thinner, kerosene, and acetone) to clean the surfaces.
- Do not put any stickers on it as this can damage the surface of the indoor unit.

---

## Removing the air filter

---



### CAUTION

- Before lowering the grille, confirm that there is no person or obstacle in the vicinity.
- Dust may fall when you lower the grille. Be careful.
- After the grille is lowered, ensure objects are not placed on the grille and pets or children do not climb onto the grille.

### NOTE

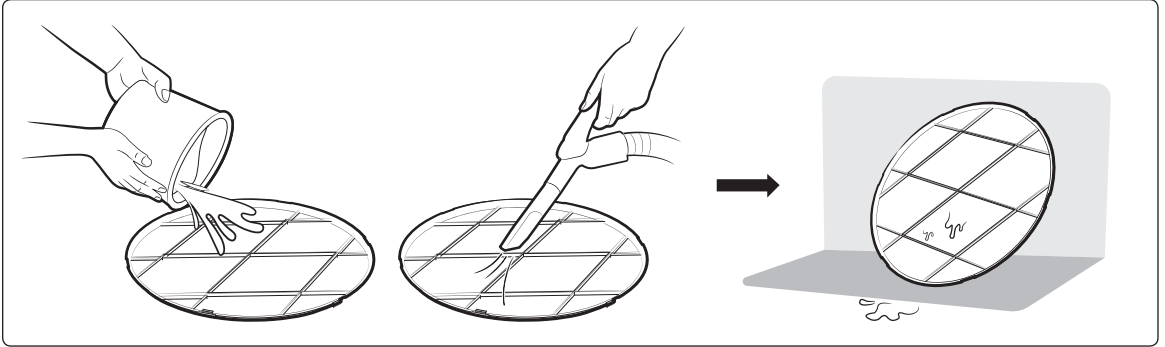
- When filter cleaning is required (after the product is used for 1000 hours), the indicator illuminates green.

# Cleaning and Maintaining

---

## Cleaning the air filter

---



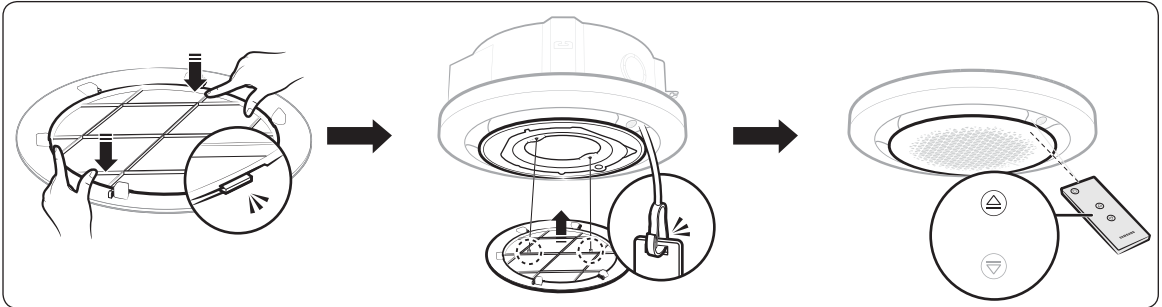
### NOTE

- Clean the air filter once every two weeks.
- Spray water or use a vacuum cleaner to remove dust.
- After removing dust, dry the air filter completely.
  - Avoid direct sunlight. Failure to do so may deform the air filter.

---

## Re-attaching the air filter

---



The appearance and internal structure of the product may differ from the figure, depending on the model.

- After re-attaching the filter is complete, select the **Options** button ► **Filter Reset** ► **SET**

---

## Resetting the filter use hours

---

After cleaning and reattaching the air filter and air purification filter, reset the filter-cleaning reminder as follows:

- AR-KH0\*\* remote control: **Options** > Select **Filter Reset**.
- AR-EH0\*\*, AR-ECO\*\* remote control: Hold down the Filter Reset button for two seconds.

---

## Technical specifications

---

Unit: mm

Model	Net weight	Net dimension (W x D x H)
PC6EUXMAN	4.8 kg	1050 x 1050 x 102

## QUESTIONS OR COMMENTS?

COUNTRY	CALL	OR VISIT US ONLINE AT
UK	0333 000 0333	<a href="http://www.samsung.com/uk/support">www.samsung.com/uk/support</a>
IRELAND (EIRE)	0818 717100	<a href="http://www.samsung.com/ie/support">www.samsung.com/ie/support</a>
GERMANY	06196 77 555 77	<a href="http://www.samsung.com/de/support">www.samsung.com/de/support</a>
FRANCE	01 48 63 00 00	<a href="http://www.samsung.com/fr/support">www.samsung.com/fr/support</a>
SPAIN	91 175 00 15	<a href="http://www.samsung.com/es/support">www.samsung.com/es/support</a>
PORTUGAL	808 207 267	<a href="http://www.samsung.com/pt/support">www.samsung.com/pt/support</a>
LUXEMBURG	261 03 710	<a href="http://www.samsung.com/be_fr/support">www.samsung.com/be_fr/support</a>
NETHERLANDS	088 90 90 100	<a href="http://www.samsung.com/nl/support">www.samsung.com/nl/support</a>
BELGIUM	02-201-24-18	<a href="http://www.samsung.com/be/support">www.samsung.com/be/support</a> (Dutch) <a href="http://www.samsung.com/be_fr/support">www.samsung.com/be_fr/support</a> (French)
NORWAY	21629099	<a href="http://www.samsung.com/no/support">www.samsung.com/no/support</a>
DENMARK	707 019 70	<a href="http://www.samsung.com/dk/support">www.samsung.com/dk/support</a>
FINLAND	030-6227 515	<a href="http://www.samsung.com/fi/support">www.samsung.com/fi/support</a>
SWEDEN	0771 726 786	<a href="http://www.samsung.com/se/support">www.samsung.com/se/support</a>
AUSTRIA	0800 72 67 864 (0800-SAMSUNG)	<a href="http://www.samsung.com/at/support">www.samsung.com/at/support</a>
SWITZERLAND	0800 726 786	<a href="http://www.samsung.com/ch/support">www.samsung.com/ch/support</a> (German) <a href="http://www.samsung.com/ch_fr/support">www.samsung.com/ch_fr/support</a> (French)
HUNGARY	0680SAMSUNG (0680-726-7864)	<a href="http://www.samsung.com/hu/support">www.samsung.com/hu/support</a>
CZECH	800 - SAMSUNG (800-726786)	<a href="http://www.samsung.com/cz/support">www.samsung.com/cz/support</a>
SLOVAKIA	0800 - SAMSUNG (0800-726 786)	<a href="http://www.samsung.com/sk/support">www.samsung.com/sk/support</a>
CROATIA	072 726 786	<a href="http://www.samsung.com/hr/support">www.samsung.com/hr/support</a>
BOSNIA	055 233 999	<a href="http://www.samsung.com/ba/support">www.samsung.com/ba/support</a>
North Macedonia	023 207 777	<a href="http://www.samsung.com/mk/support">www.samsung.com/mk/support</a>
MONTENEGRO	020 405 888	<a href="http://www.samsung.com/support">www.samsung.com/support</a>
SLOVENIA	080 697 267 (brezplačna številka)	<a href="http://www.samsung.com/si/support">www.samsung.com/si/support</a>
SERBIA	011 321 6899	<a href="http://www.samsung.com/rs/support">www.samsung.com/rs/support</a>
Kosovo	0800 10 10 1	<a href="http://www.samsung.com/support">www.samsung.com/support</a>
ALBANIA	045 620 202	<a href="http://www.samsung.com/al/support">www.samsung.com/al/support</a>
BULGARIA	*3000 Цена на един звазгски разговор 0800 111 31 Безплатен за всички оператори	<a href="http://www.samsung.com/bg/support">www.samsung.com/bg/support</a>
ROMANIA	*8000 (apel in retea) 08008-726-78-64 (08008-SAMSUNG) Apel GRATUIT Atenție: Dacă efectuați apelul din rețeaua Digi (RCS/RDS), vă rugăm să ne contactați formând numărul Telverde fără ultimele două cifre, astfel: 0800872678.	<a href="http://www.samsung.com/ro/support">www.samsung.com/ro/support</a>
ITALIA	800-SAMSUNG (800.7267864)	<a href="http://www.samsung.com/it/support">www.samsung.com/it/support</a>
CYPRUS	8009 4000 only from landline, toll free	<a href="http://www.samsung.com/gr/support">www.samsung.com/gr/support</a>
GREECE	80111-SAMSUNG (80111 726 7864) only from land line (+30) 210 6897691 from mobile and land line	
POLAND	801-172-678* lub +48 22 607-93-33* * (opłata według taryfy operatora)	<a href="http://www.samsung.com/pl/support/">http://www.samsung.com/pl/support/</a>
LITHUANIA	8-800-77777	<a href="http://www.samsung.com/lt/support">www.samsung.com/lt/support</a>
LATVIA	8000-7267	<a href="http://www.samsung.com/lv/support">www.samsung.com/lv/support</a>
ESTONIA	800-7267	<a href="http://www.samsung.com/ee/support">www.samsung.com/ee/support</a>

Samsung, PO Box 12987, Blackrock, Co. Dublin. Ireland  
or Blackbushe Business Park, Yateley, GU46 6GG. UK

