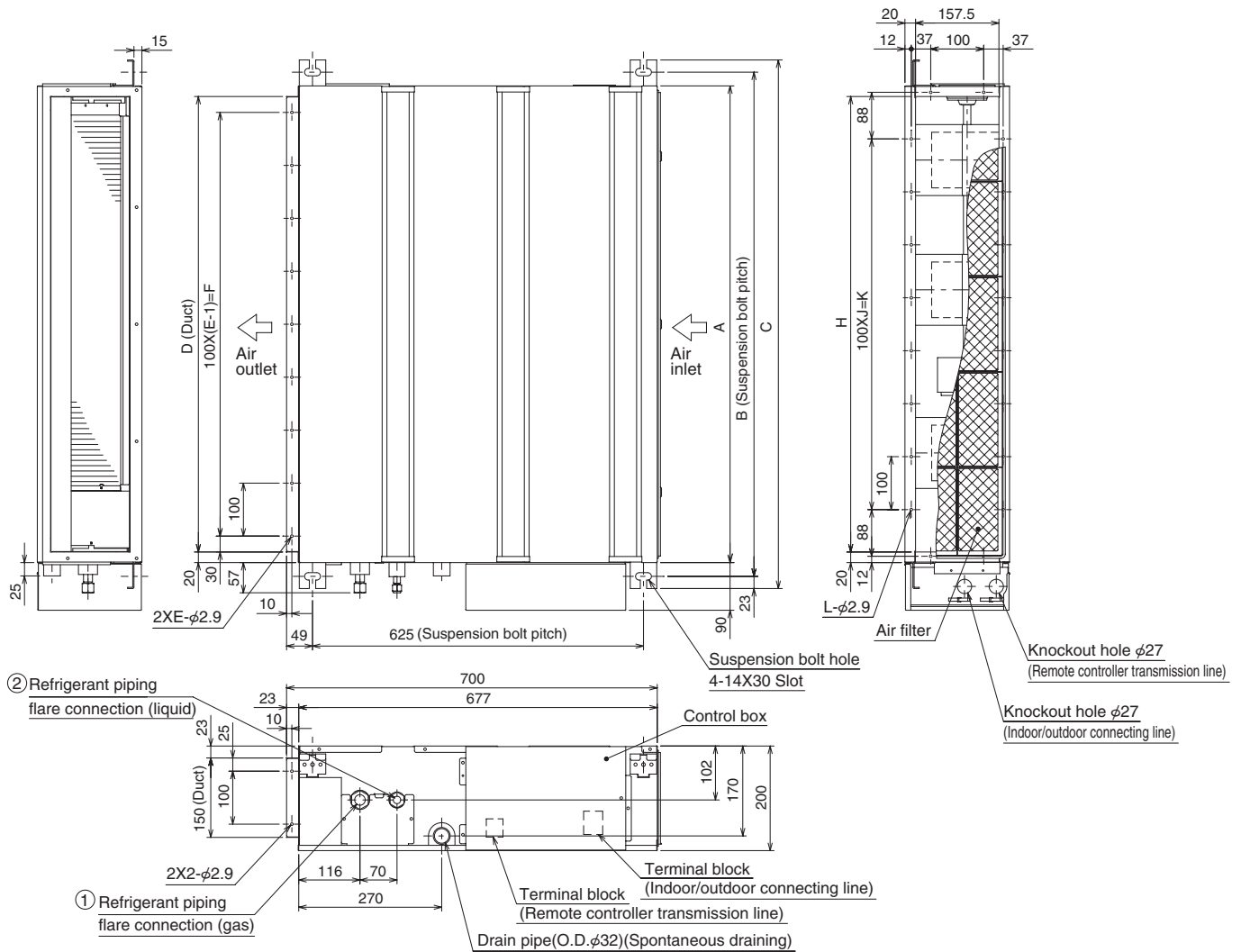


B.2.2 OUTLINES AND DIMENSIONS

B.2.2.1 INDOOR UNIT

SEZ-M25DA SEZ-M25DAL
 SEZ-M35DA SEZ-M35DAL
 SEZ-M50DA SEZ-M50DAL
 SEZ-M60DA SEZ-M60DAL
 SEZ-M71DA SEZ-M71DAL

Unit : mm



Model	A	B	C	D	E	F	G	H	J	K	L	① Gas pipe	② Liquid pipe
SEZ-M25DA(L)	700	752	798	660	7	600	800	660	5	500	16	φ9.52	φ6.35
SEZ-M35DA(L)	900	952	998	860	9	800	1000	860	7	700	20		
SEZ-M50DA(L)													
SEZ-M60DA(L)	1100	1152	1198	1060	11	1000	1200	1060	9	900	24	φ15.88	φ9.52
SEZ-M71DA(L)													

- Note 1. Use M10 screw for the suspension bolt (field supply).
 2. Keep the service space for the maintenance at the bottom.
 3. This chart indicates for SEZ-M50DA(L) model, which has 3 fans.
 SEZ-M25,35DA(L) models have 2 fans.
 SEZ-M60,71DA(L) models have 4 fans.
 4. In case an inlet duct is used, remove the air filter (supply with the unit), then install the filter (field supply) at suction side.

- SEZ-M25DA SEZ-M25DAL
- SEZ-M35DA SEZ-M35DAL
- SEZ-M50DA SEZ-M50DAL
- SEZ-M60DA SEZ-M60DAL
- SEZ-M71DA SEZ-M71DAL

Secure enough access space to allow for the maintenance, inspection, and replacement of the motor, fan, drain pump, heat exchanger, and electric box in one of the following ways.

Select an installation site for the indoor unit so that its maintenance access space will not be obstructed by beams or other objects.

- (1) When a space of 300 mm or more is available below the unit between the unit and the ceiling (Fig. 1)
 - Create access door 1 and 2 (450 x 450 mm each) as shown in Fig. 2.
 - (Access door 2 is not required if enough space is available below the unit for a maintenance worker to work in).
- (2) When a space of less than 300 mm is available below the unit between the unit and the ceiling (At least 20 mm of space should be left below the unit as shown in Fig. 3.)
 - Create access door 1 diagonally below the electric box and access door 3 below the unit as shown in Fig. 4.
 - or
 - Create access door 4 below the electric box and the unit as shown in Fig. 5.

Unit : mm

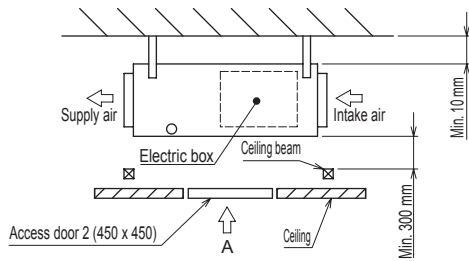


Fig. 1

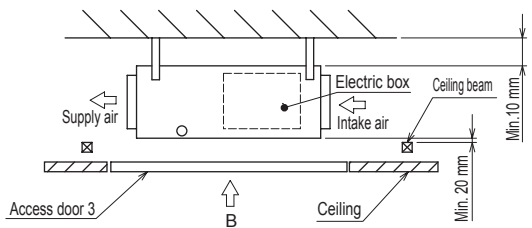


Fig. 3

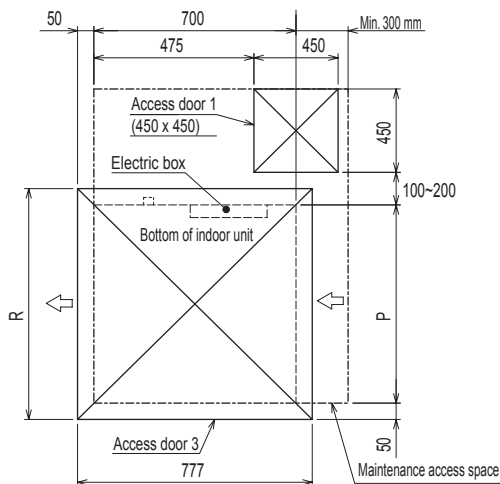


Fig. 4 (Viewed from the direction of the arrow B)

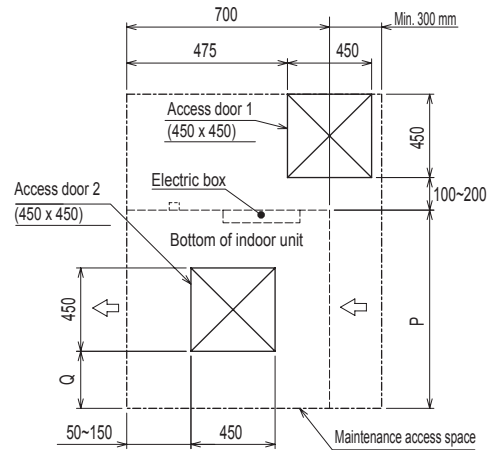


Fig. 2 (Viewed from the direction of the arrow A)

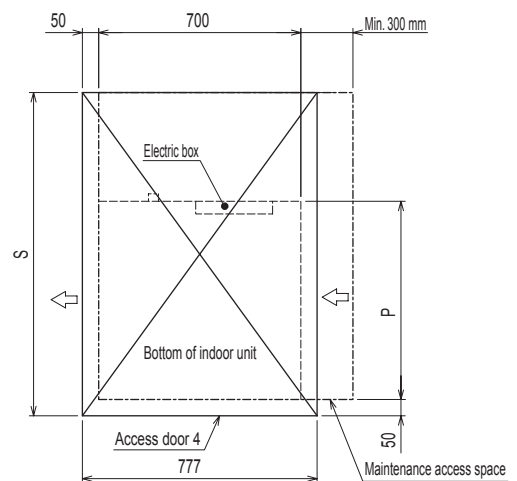


Fig. 5 (Viewed from the direction of the arrow B)

Model	P	Q	R	S
SEZ-M25	700	50~150	800	1300
SEZ-M35, 50	900	150~250	1000	1500
SEZ-M60, 71	1100	250~350	1200	1700