

Specifications

Console

- SPI Ioniser (included).
- Slim design: only 100 mm in width.
- Built-in electronic expansion valve (EEV) for refrigerant flow control (2000-step).
- Two separate air outlets, upper (cooling) and bottom (heating) to avoid stratification.
- Long-life washable permanent filter.
- Auto Restart function.



Indoor Unit		AJ026TNJDKG/EU	AJ035TNJDKG/EU	AJ052TNJDKG/EU	
Capacity					
	Cooling	kW	2.6	3.5	5.2
	Heating up to +7 °C	kW	2.9	3.8	5.6
Performance					
	Airflow Rate	m ³ /min	9.0/7.8/6.7	10.5/9.3/8.2	11.2/9.9/8.6
	Sound Power	Cooling dB(A)	53	57	60
	Sound Pressure	H/M/L dB(A)	36/31/23	38/35/24	43/39/32
Electrical Data					
	Power Source	Φ, #, V, Hz	1Φ, 2, 220-240 V, 50 Hz	1Φ, 2, 220-240 V, 50 Hz	1Φ, 2, 220-240 V, 50 Hz
	Power Consumption	Cooling W	30	35	50
		Heating W	30	35	50
	Current Input	Cooling A	0.25	0.29	0.29
		Heating A	0.25	0.29	0.29
Dimensions					
	Net Dimensions (W x H x D)	mm	720 x 199 x 620	720 x 199 x 620	720 x 199 x 620
	Net Weight	kg	15.7	15.7	15.7
Refrigerant					
	Piping Connections	Liquid Pipe ø, inch	1/4	1/4	1/4
		Gas Pipe ø, inch	3/8	3/8	1/2
	Piping Connections	Drain Pipe ø, mm	VP25 (OD 32, ID 25)	VP25 (OD 32, ID 25)	VP25 (OD 32, ID 25)

Accessories

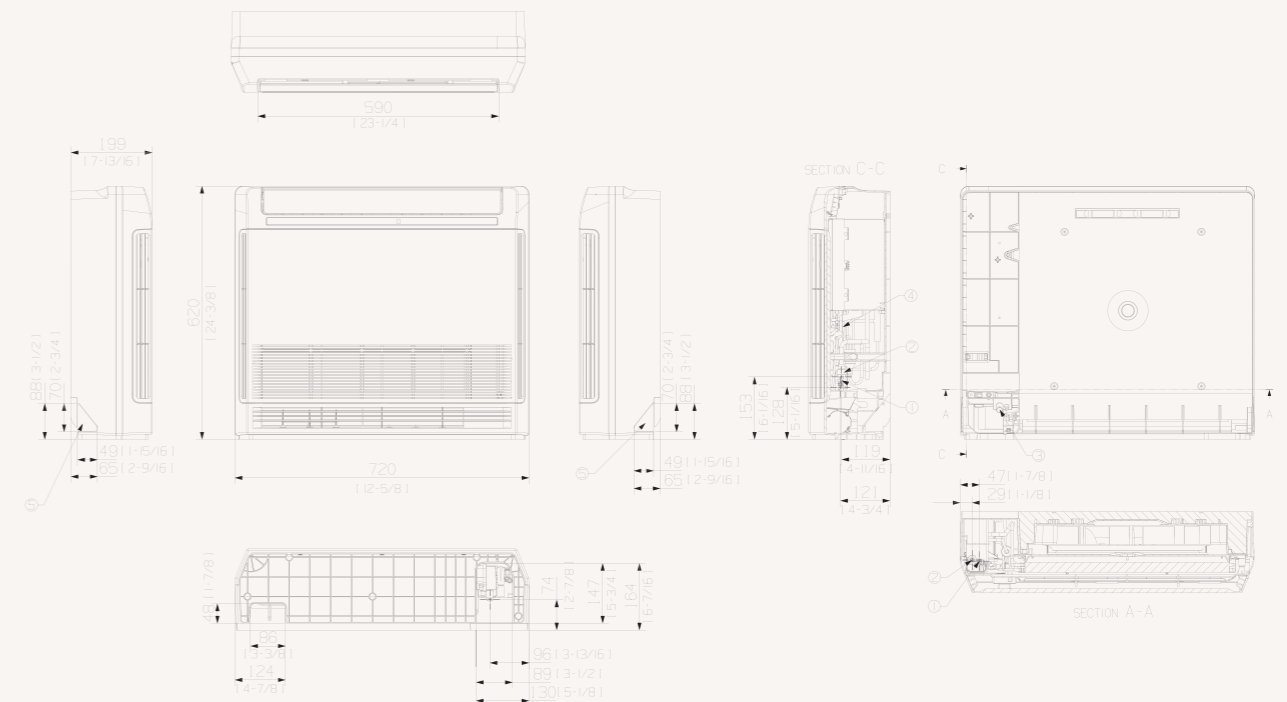


Advanced Wired Controller	Simple Type Controller	Touch Controller	Wired Remote Controller	Wi-Fi Kit
MWR-WG00JN/MWR-WG00KN	MWR-SH00N	MWR-SH11N	MWR-WE13N	MIM-H04EN

Dimensional drawings

Console

AJ***TNJDKG/EU



NO	Name	Description
		AJ026RBJDEG/EU MH026FJEA
		AJ035/052RBJDEG/EU MH035/052FJEA
1	Liquid pipe connection	ø6.35 (1/4)
2	Gas pipe connection	ø9.52 (3/8)
3	Drain pipe connection	ID18 [11/16] Hose
4	Power supply/communication wiring conduits	
5	Knockout hole for drain hose	