

Specifications

LSP Duct (drain pump included)

- High efficiency microchannel heat exchanger.
- Built-in electronic expansion valve (EEV) for refrigerant flow control (2000-step).
- Auto Restart function.
- Condensation drain pump.
- Long-life HD 40 permanent filter is included.
- Auto ESP function.
- SPI Ioniser.



Indoor Unit			AJ026TNLDEG/EU	AJ035TNLDEG/EU
Capacity				
	Cooling	kW	2.6	3.5
	Heating up to +7 °C	kW	2.9	3.8
Performance				
	Airflow Rate	m ³ /min	8.6/7.6/6.6	9.8/8.8/7.8
	Sound Power	Cooling dB(A)	53	53
	Sound Pressure	H/M/L dB(A)	30/28/25	32/30/27
Electrical Data				
	Power Source	Φ, #, V, Hz	1Φ, 2, 220-240 V, 50 Hz	1Φ, 2, 220-240 V, 50 Hz
	Power Consumption	Cooling W	80	80
		Heating W	80	80
	Current Input	Cooling A	0.4	0.4
		Heating A	0.4	0.4
Dimensions				
	Net Dimensions (W x H x D)	mm	900 x 199 x 600	900 x 199 x 600
	Net Weight	kg	23.3	23.3
Refrigerant				
	Piping Connections	Liquid Pipe ø, inch	1/4	1/4
		Gas Pipe ø, inch	3/8	3/8
	Piping Connections	Drain Pipe ø, mm	VP25 (OD 32, ID 25)	VP25 (OD 32, ID 25)
Others				
	Accessories	Drain Pump	MDP-E075SEE3	MDP-E075SEE3
		Max. Lifting Height/ Displacement	mm / litres/h	750/24
		Air Filter	Removable/Washable	Removable/Washable

Accessories

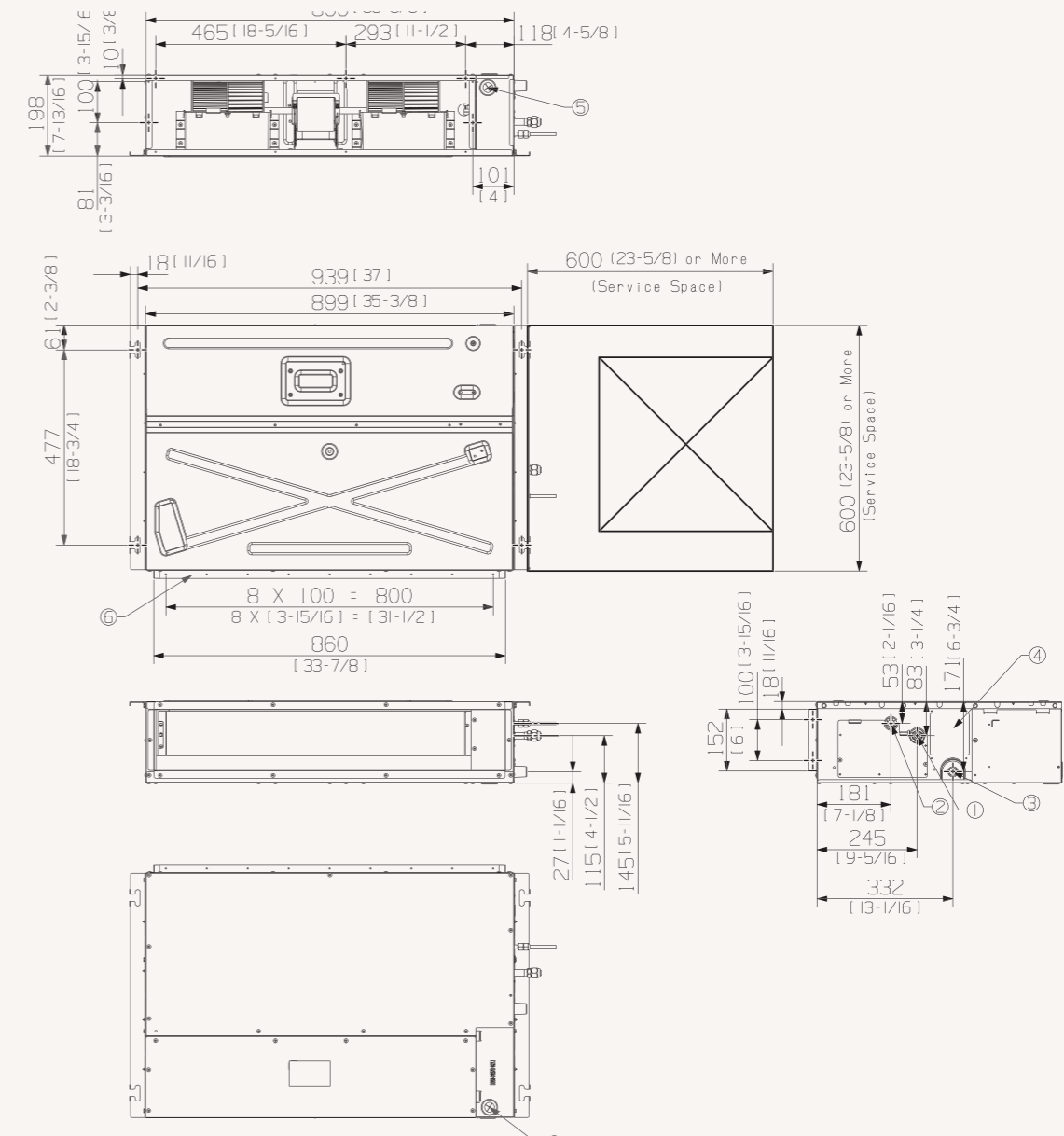


Advanced Wired Controller	Simple Type Controller	Touch Controller	Wired Remote Controller	Wi-Fi Kit
MWR-WG00JN/MWR-WG00KN	MWR-SH00N	MWR-SH11N	MWR-WE13N	MIM-H04EN

Dimensional drawings

LSP Duct

AJ***TNLDEG/EU



NO	Name	Description
1	Gas pipe connection	ø9.52 (3/8)
2	Liquid pipe connection	ø6.35 (1/4)
3	Drain pipe connection	VP25 (OD 32, ID 25)
4	Knock-out hole for drain pump	Option kit
5	Power supply/communication wiring conduits	
6	Air outlet duct flange	